



A Simple Skip Hire Guide

**TOM
WHITE**



Contents

01

What can you put in a skip?

02

What size skip do you need?

03

Will you need a skip permit?

04

How high can you load a skip?

What can you put in a skip?

You can put a whole range of materials into a skip, including wood, metal, garden waste, plastic and brick. However, there are a few materials you can't put into a skip. These are:

- Asbestos
- Batteries
- Clinical or medical waste, including syringes
- Electrical appliances & equipment
- Fluorescent tubes
- Fridges, freezers and air conditioning units
- Gas canisters and gas bottles
- Hazardous and toxic waste
- Liquids
- Oil petrol, diesel
- Paint and cans of paint
- Plasterboard
- Tyres
- TVs & computer screens
- Upholstered furniture
- Mattresses

Any prohibited items found in the skip upon collection will be subject to a charge and the restricted items returned to you.

If you need to dispose of materials not suitable for skips, there are other options available. We offer a Click 'n' Clear van rubbish removal which can collect liquids, paint, plasterboard, TVs, fridges and other electrical items.

For hazardous waste and other prohibited items, contact our helpful team with details of the materials, and we can get back to you with a quote.

orders@tomwhitewate.co.uk 024 7666 2525



What size skip do you need?



A cubic yard is the industry standard for skip sizes, but if you're not familiar with that measurement, there is an easier way to understand how much skip space you'll need. A cubic yard is approximately the size of two small household washing machines.

The right skip size depends on the amount of waste and how much space you have to put the skip. The larger the container, the cheaper it will be per cubic yard of waste removed, but it's only more cost-effective if you have enough waste to fill it; otherwise, you'll still have to pay for the unused space. Most councils do not allow skips larger than 8 yards to be placed on a public highway, so ensure you have enough space on your property if you require something bigger.

MiniSkip

The 2 and 3 cubic yard or mini skip is ideal for small tasks like retiling a bathroom, seasonal clear-outs, or a secondary skip for a single waste stream. It can hold approximately six wheelie bins of waste.

MidiSkip

Midi skips are 4 cubic yards and are ideal for minor refurbishments such as a second bathroom or utility rooms. A midi skip can hold approximately 12 wheelie bins of waste.

Builders Skip Hire

The most popular skip size is our builders skip, measuring 7.3 cubic yards. These are great for DIY or building projects and can be used for disposing of hardcore or rubble. Builders skips can handle waste from most residential extensions or garden landscaping.

Maxi Skip

Our large skips are available in 10 and 14 cubic yards. They are ideal for large-scale projects or substantial quantities of furniture, such as a complete home or office clearance. Maxi skips are not suitable for heavy waste materials like stone, brick and soil as it makes the skip too heavy for transport.



Will you need a skip permit?

If you're planning to situate the skip on a public road or pavement, you will need to get a skip permit. However, if the skip will be on private property and won't cause an inconvenience to others, then a skip permit won't be necessary.

What if it's not my property?

If you plan on putting a skip on someone else's property, for example, on a neighbour's driveway or a shared driveway, you will need to get permission from the landowner(s) first.

Who issues the permit

Your local council issues a permit for placing a skip on a public road.

Do I have to pay for parking charges?

Skips may not be a vehicle, but they are still subject to parking charges if placed in a controlled parking area, such as residential parking zones or pay and display areas. You will need to organise and pay for a parking bay suspension.

Who will arrange a permit?

We can arrange all of the necessary permits for your skip hire and include them as part of the hire cost, so you don't have to make any arrangements. We will do all the work for you as part of our simple principle.

How much do permits cost?

Charges vary across local authorities. Coventry City Council skip permits are priced from £79* and are valid for two weeks. A Warwickshire County Council permit costs £110.

We will advise you on the cost of the permit when booking.

How long is a permit valid?

Skip hire permits are usually valid for 14 days. However, this length of permits differs across local authorities. We will advise you on the duration of the permit when booking.

How high can you load a skip?



Your skip will have a load level marked on the side, so you can see where you can safely load your waste. If you're unsure where the load level is, our helpful drivers will be happy to show you.

The load level means you should never fill your skip above the height of its sides. If you exceed this height, the driver will refuse to collect your skip or ask you to empty the excess before removing it. Overloaded skips are dangerous to transport as debris could fall out onto the roads and cause damage or injury to others.

Load level



Why choose Tom White?



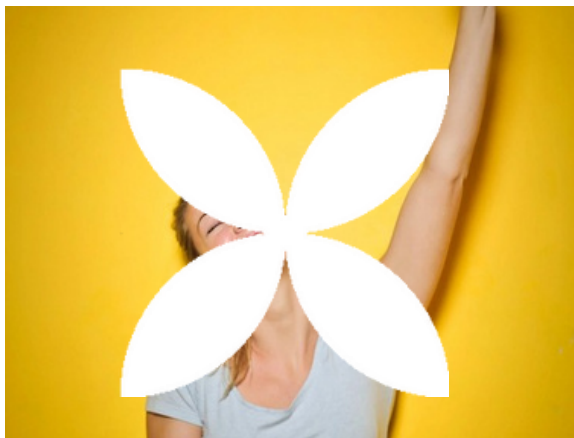
We invest in profit for purpose

We operate a profit for purpose business model, where 100% of our profit is used to benefit the communities we serve, to support education, health and social care and community projects. As we grow and expand, so does the impact of our purpose.



We're reducing the carbon impact

We invest in new processes to transform waste into valuable commodities and put materials back into the supply chain. We will never export outside the UK.



We're making things simple

Organising skip hire shouldn't be exhausting. That's why we make things simple. From booking online to organising permits and offering support to help find the right solution for you, so you can get back to achieving more important things.

**Need to
know
more?**

Get in touch....

www.tomwhitewaste.co.uk

024 7666 2525

orders@tomwhitewaste.co.uk



Tomwhitewasteltd



tom-white-waste



TomWhiteWaste

